

Nicholas Kutchi
L/E
Dr. Mistrick
Duke University Medical School- School of Nursing
Durham, NC
September 14, 2007
Lighting Proposal Memo

Large Work Space

Peter & Ginny Nicholas Auditorium & Learning Center:

This is a large, 46' x 58', auditorium used as a classroom and meeting area. This room has seating for approximately 150 people. The seating and desks in this room are permanent fixtures. There is a gradual stepping down of the floor, to allow the farthest desks to be able to see and hear the lecturer, as well as not be as far away as if there was no stepping. Only one wall in this space contains windows. These windows are high up on the wall and not very large.



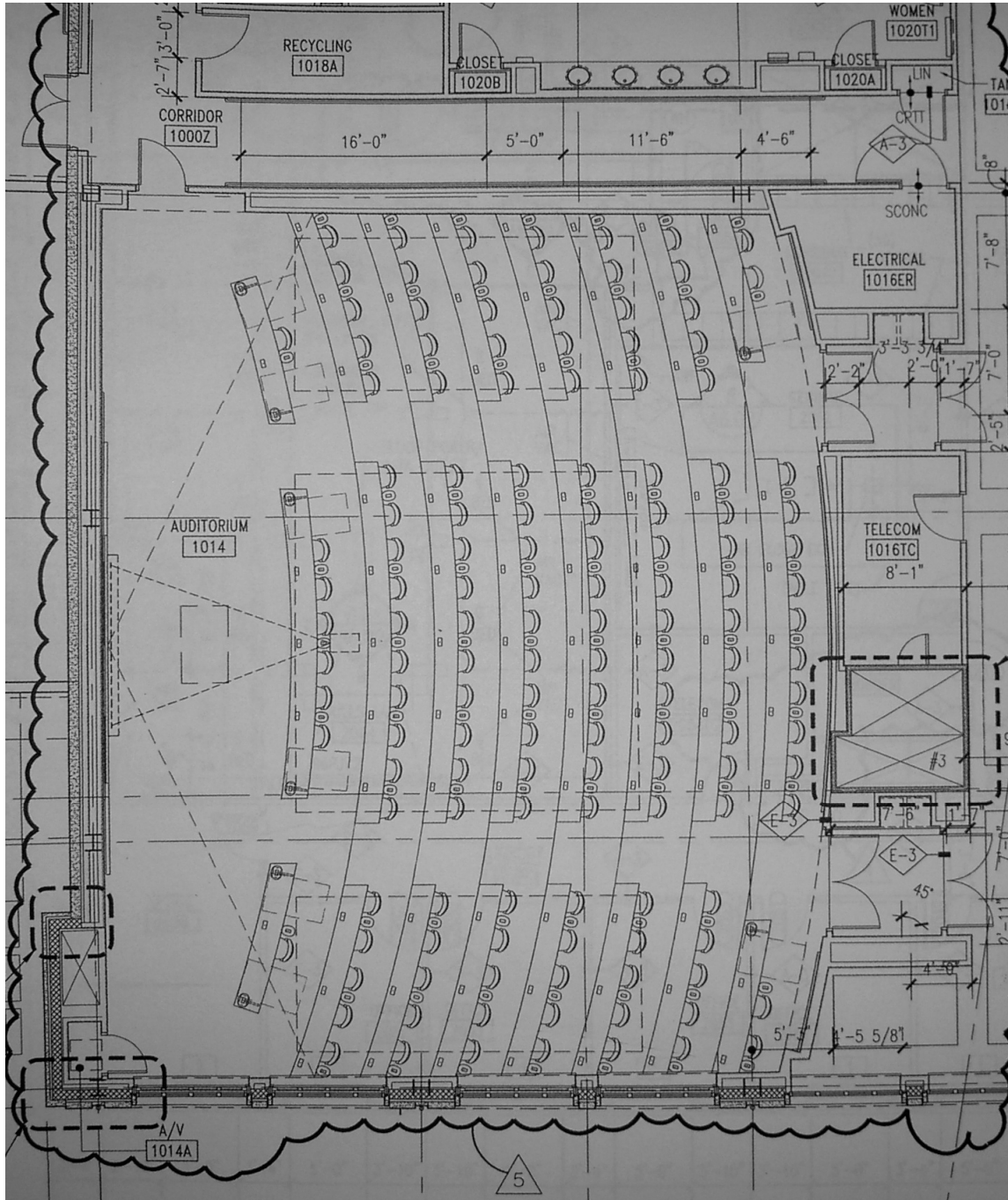
Materials:

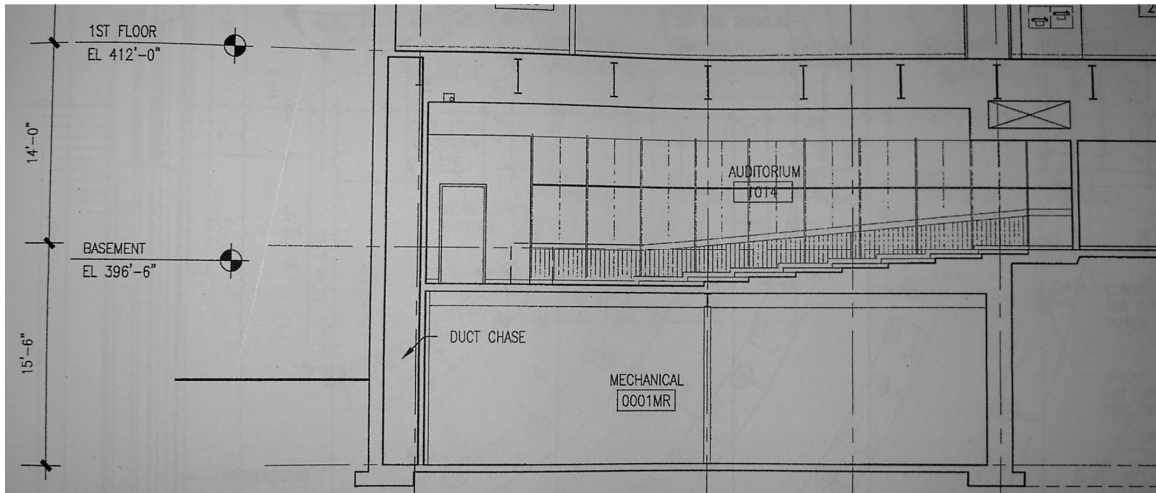
- Carpeted flooring
- Painted GWB walls
- Fabric wrapped wall panels
- Combination of GWB and Acoustic Ceiling tiles
- Imitation wood plastic laminated desks
- Cushioned plastic swivel auditorium chairs

Activities:

- Large classroom
- Lectures
- Audio Visual presentations

Large Work Space (Cont.)





Special Purpose Space:

Lounge 1025 - Café DUSON:

This is a lounge/café, used as a coffee bar and light food counter with seating and tables to lounge chairs to seat approximately 65 people. This is a large, 28' x 66' x 28', double high space with full height windows on the three exterior walls. This space also contains large arching roof supports that are large wooden timbers and made to look like Gothic Cathedral arches, which follow the Duke University architectural style.



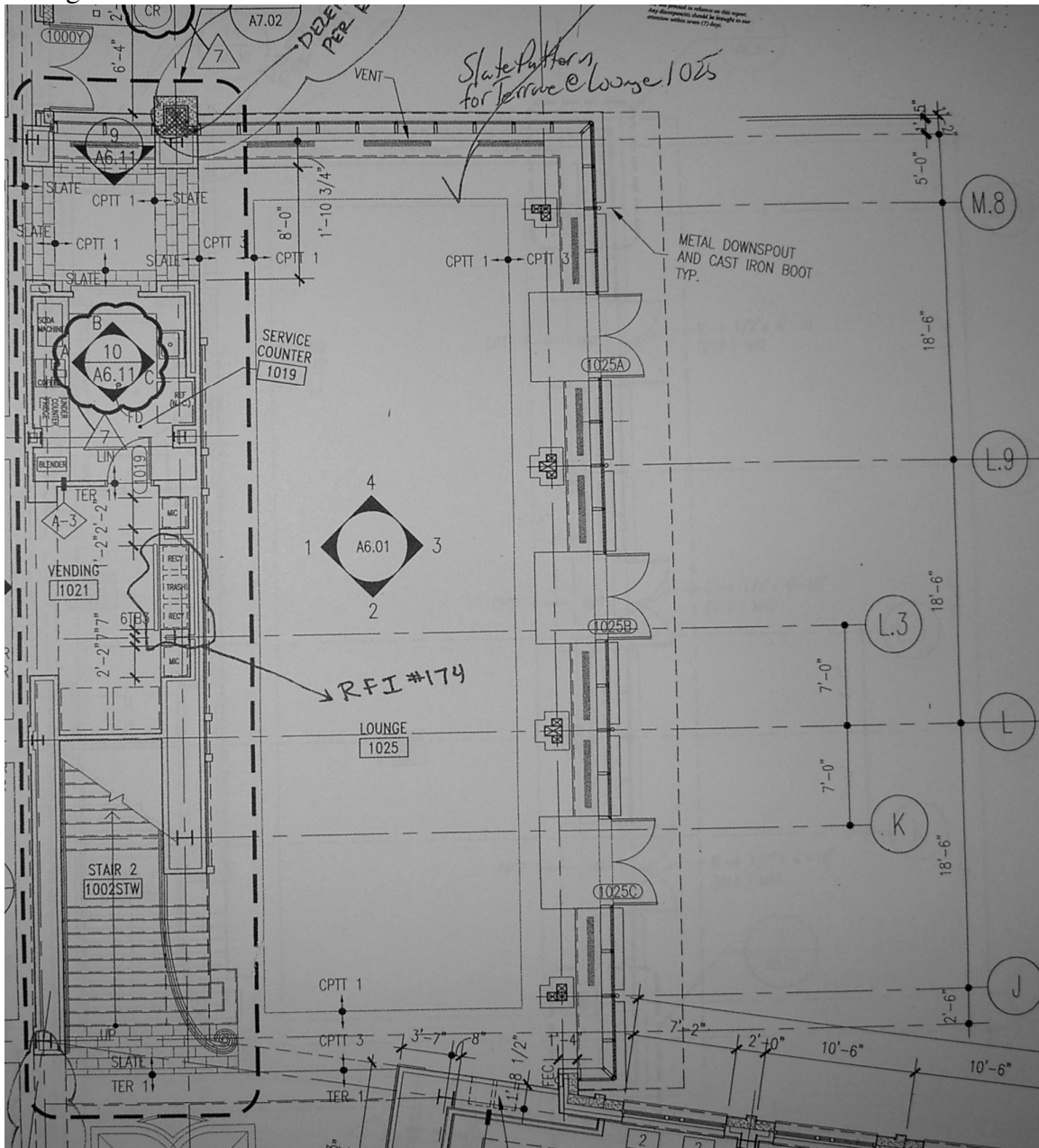
Materials:

- Slate flooring
- Glass curtain walls
- Wood paneling on ceiling
- Wood timbers
- Wood paneling on some walls
- Painted GWB on other walls
- Aluminum window mullions

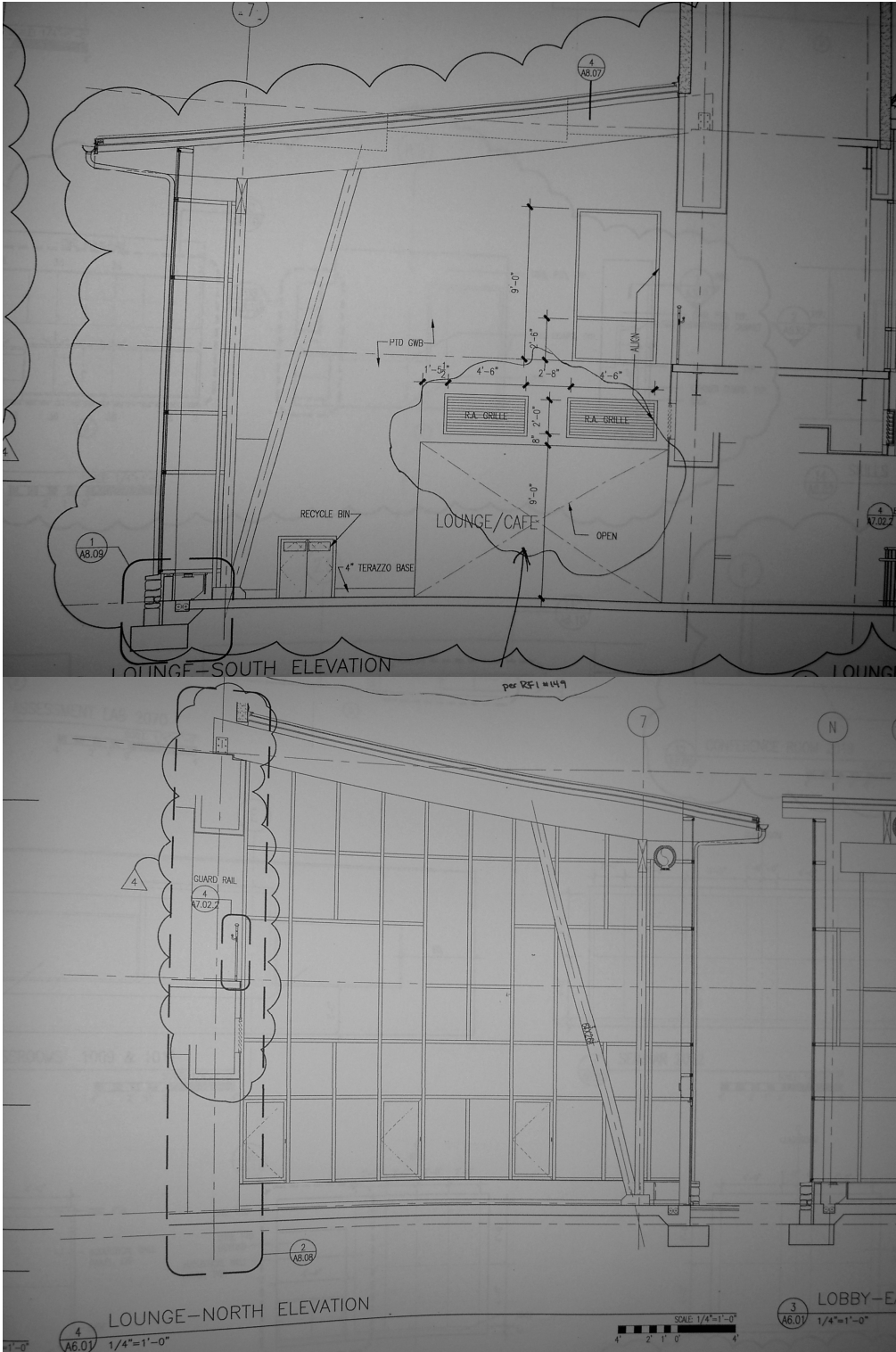
Activities:

- Lounge
- Study area
- Coffee bar and light food service and consumption

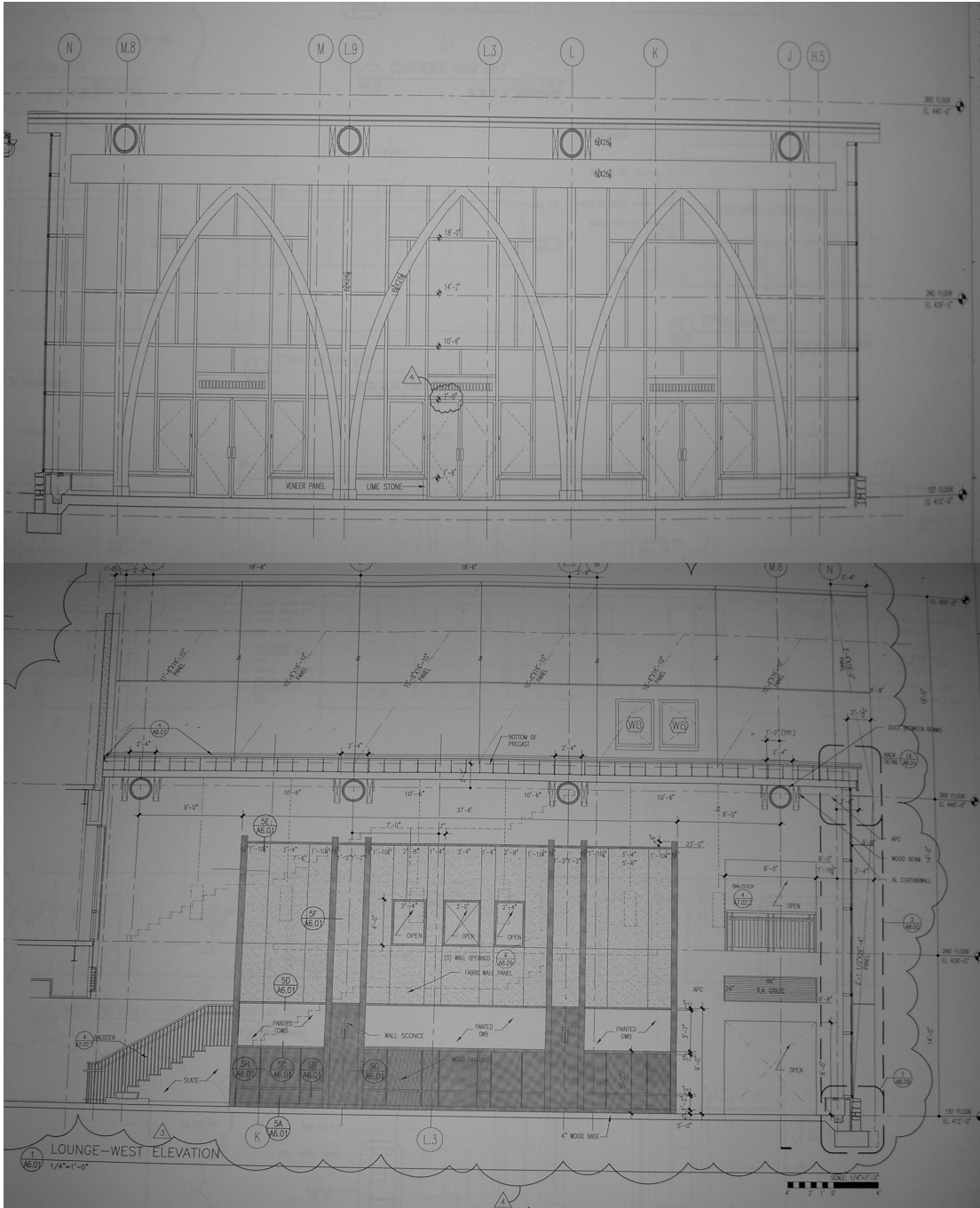
Special Purpose Space (Cont.):
Lounge Plan:



Special Purpose Space (Cont.):
Interior Elevations:



Special Purpose Space (Cont.):
Interior Elevations:



Circulation Space:
Main Tower Lobby:

This space is the main entrance to the building that is located in the prominent tower portion of the building. The floor of this lobby has the Duke School of Nursing emblem worked into the terrazzo flooring. The main entry is approximately 23'x30'x26'.



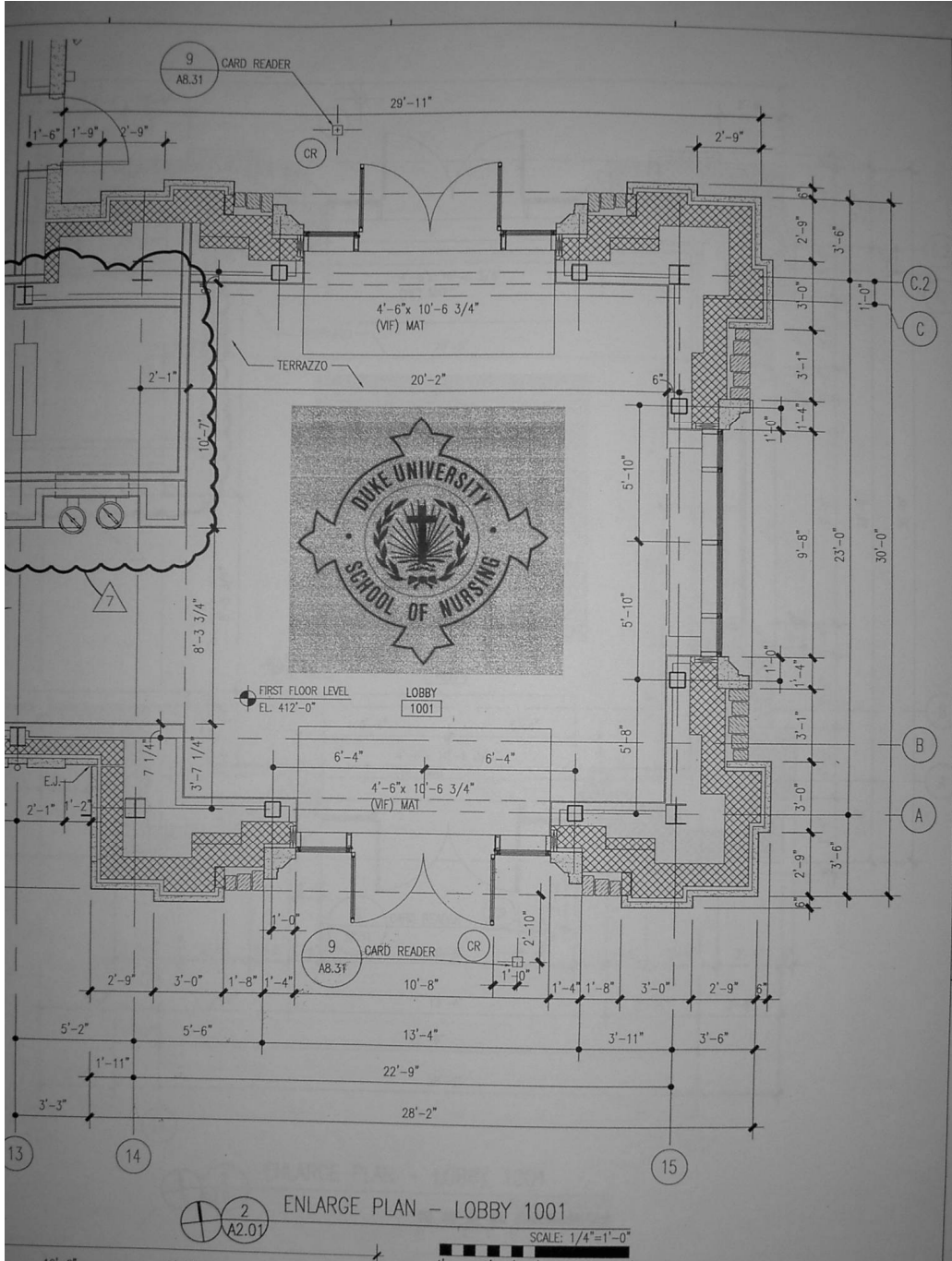
Materials:

- Terrazzo flooring
- Painted GWB, portions of walls and ceiling
- Finished wood wall paneling
- Finished wood ceiling paneling
- Full height glass windows on all three exterior sides, two of which have double wide glass doors

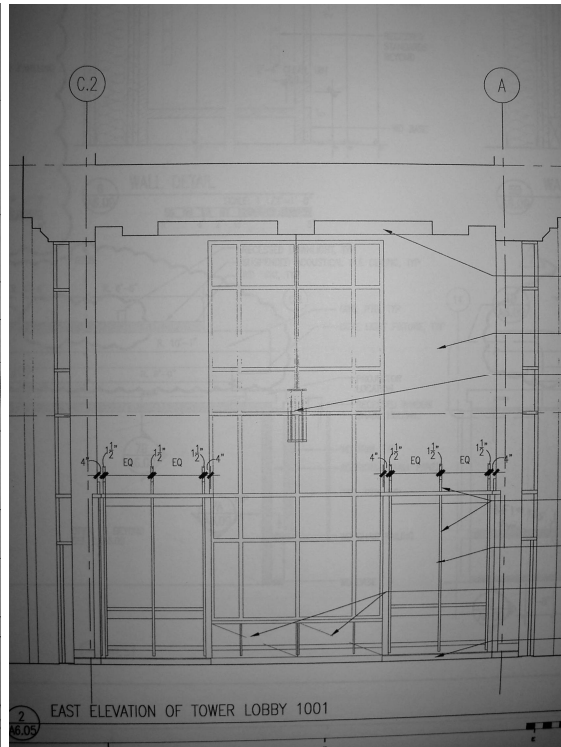
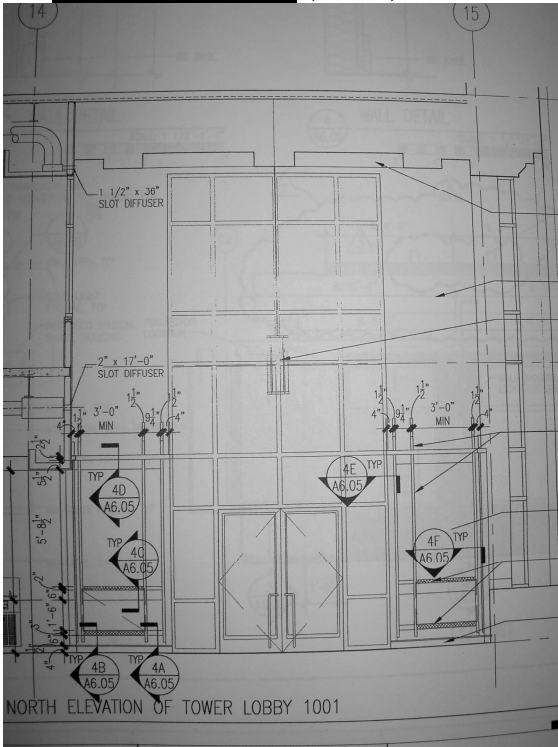
Circulation Space (Cont.):

Activities:

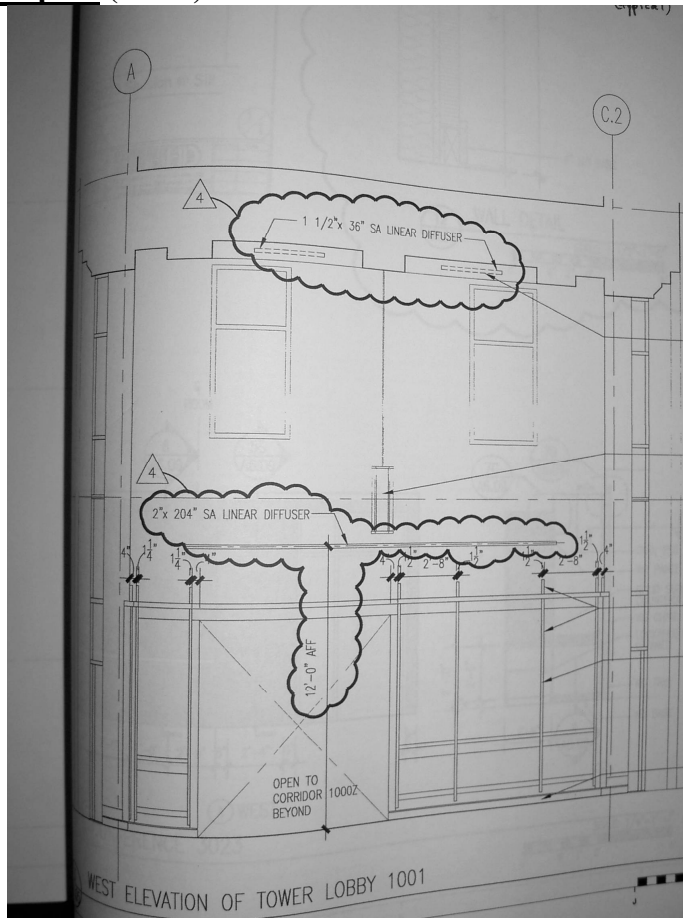
- Lobby
- Waiting area
- Entrance



Circulation Space (Cont.):



Circulation Space (Cont.):



Outdoor Space:

Patio- Champagne Courtyard:

This space is the outdoor portion of the Café DUSON lounge. There are benches and patio tables that can be used by the users of the lounge services or any passing people. The approximate size is 24'x60' and seats approximately 54 people.



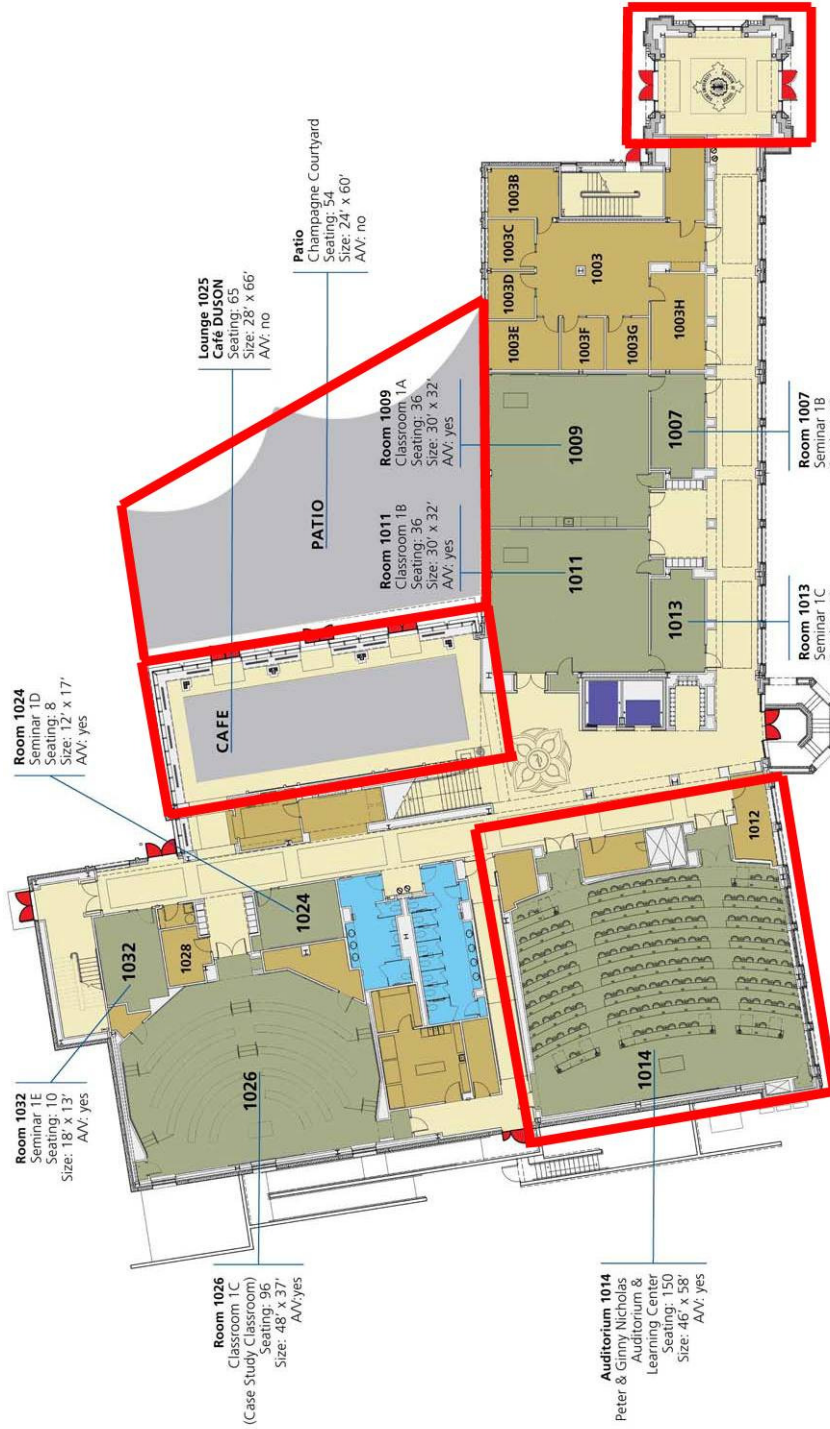
Materials:

- Bluestone stone work, for patio
- Duke Stone retaining walls

Activities:

- Gathering
- Studying
- Eating
- Relaxing





- Classrooms, Seminar Rooms & Nursing Labs
- Offices & Support Spaces
- Rest Rooms
- Circulation
- Emergency Exits
- Elevators
- Café & Patio

First Floor

Duke University
School of Nursing

307 Trent Drive, Durham, North Carolina 27710